



GULFSHORE PLAYHOUSE

*Kristen Coury, CEO & Producing Artistic Director*

# Another Revolution

A WORLD PREMIERE BY JACQUELINE BIRCHER

DIRECTED BY LISA ROTHE

PREMIER CORPORATE PARTNER: 大成 DENTONS COHEN & GRIGSBY

SEASON ANGELS: JANE & STEVE AKIN • PATTY & JAY BAKER

CORPORATE SEASON AMBASSADOR: MORAN  
WORTH MANAGEMENT

SEASON BENEFACTORS: NANCY & TOM GALLAGHER • SUSAN REGENSTEIN & BARRY FRANK • JANE & DAVE WILSON

SEASON AMBASSADORS: ERIKA & PETER ARON • SHELLEY & STEVEN EINHORN • CHRISTINE & TERRANCE FLYNN  
VALERIE & NIZAR GHOUSSAINI • JENNY & RICH HOUSH • JAMES & BRIGITTE MARINO • SANDI & TOM MORAN  
CARLY STEWART, PRIVATE JEWELER • HAVE JEWELS WILL TRAVEL • JOHN & CAROL WALTER

EXECUTIVE PRODUCERS: LEE & PENNY ANDERSON, MARY & PHIL BEUTH, KYLA & RICH DE ASLA, DARLENE & DON DEMICHELE, BOBBI & DAVID DROBIS, ROBERT & VICTORIA FESMIRE,  
TIM HABBERSHOW & ALLISON MURRAY, MITCHELL HERTZ & ANNE CARLUCCI, DAVID & JERRI HOFFMANN, GEORGE & PATRICIA KRAUS, PAMELA & BOB KRUPKA, GERRY & JOEY LIPES, DAN & KATHY MEZZALINGUA,  
KRISTIN & JOHN MILLER, THELMA & BUD NEGLEY, HUGH & ELIZA NEVIN, CHRISTINE PADDOCK, GUY & SHERI PAPARELLA, PAREKH FAMILY FOUNDATION, GAIL KERN PASTER, ANTHONY & BEVERLY PETULLO  
DOTTIE & JOHN REMONDI, GLENDA & RICH STRUTHERS, THE VINCENT VON ZWEHL MEMORIAL FUND, SAM & JULIE WYMAN

PRODUCERS: LIZ & JIM JESSEE

*Experience. Knowledge. Proven Results.*



**FROM OLD NAPLES**



**TO NAPLES SQUARE**



**TO THE ISLES OF COLLIER PRESERVE**

*Whether you are selling your home or condo or buying a home or condo, call me and let's get started!*



**BRUCE MILLER**

**(239) 206-0868**

720 5th Avenue South, Suite 201, Naples, FL 34102

[Bruce@NaplesBeachesRealEstate.com](mailto:Bruce@NaplesBeachesRealEstate.com)

[www.NaplesBeachesRealEstate.com](http://www.NaplesBeachesRealEstate.com)

CERTIFIED LUXURY HOME MARKETING SPECIALIST®, REALTOR®

**CLHMS**  
Certified Luxury Home  
Marketing Specialist



**JP**  
LUXURY  
PORTFOLIO  
INTERNATIONAL

**WILLIAM RAVEIS**  
REAL ESTATE • MORTGAGE • INSURANCE

大成 DENTONS

COHEN  
& GRIGSBY

## Welcome to Gulfshore Playhouse.

On behalf of the law firm Dentons Cohen & Grigsby, we are honored to serve once again as a corporate partner of Gulfshore Playhouse and to play a supporting role in bringing first class, professional theatre to Naples.



Since its inception, Dentons Cohen & Grigsby has been committed to the communities in which it serves, representing clients with sound business counsel, innovative legal thinking, and a powerful understanding of the dynamics that shape our world.

We are particularly proud of our collaboration with Gulfshore Playhouse. Not only does Gulfshore Playhouse contribute to a wealth of arts in our community through exceptional theatre, but also the Education programs serve our area's children through a variety of opportunities. Mentored by the professional teaching artists hired by Gulfshore Playhouse, students perform on stage, learn with ThinkTheatre's in-school cross-curricular residencies, experience transformational work through community partnerships, see professional theatre during student matinees, and much more.

Our partnership with Gulfshore Playhouse is a way of extending our firm's high level of commitment to the arts, enriching the communities in which we serve.

We hope you enjoy tonight's performance and continue to support Gulfshore Playhouse, an exceptional cultural resource and treasure for our community.

Sincerely,

**Jason Hunter Korn**

Managing Shareholder, Dentons Cohen & Grigsby, Florida



大成 DENTONS

COHEN  
& GRIGSBY

**Dentons Cohen & Grigsby  
proudly supports Gulfshore  
Playhouse in its 2021-22 season.**

Enjoy the show!

**Dentons, the law firm  
of the future is here.**

Dentons Cohen & Grigsby P.C.  
Mercato - Suite 6200  
9110 Strada Place, Naples, FL, 34108

[dentons.com/dcg](https://dentons.com/dcg)

© 2021 Dentons. Dentons is a global legal practice providing client services worldwide through its member firms and affiliates.  
Please see [dentons.com](https://dentons.com) for Legal Notices.

# A Letter from the Founder



If you're reading this, that means you are sitting in a seat getting ready to watch a live performance on our stage. For a few hours today, you can put away the screens and devices and enjoy the magic of living, breathing theatre. What a thrill that is to say! We are so glad to have you back in our theatre for a season of thought-provoking, funny, insightful, and moving work.

When selecting this season last winter, it was still very much unclear what the world would look like. We carefully selected our season to keep our cast sizes small while still ensuring that each work is nothing short of the excellence you've come to expect at Gulfshore Playhouse. We have gathered teams of phenomenally talented theatre professionals - actors, designers, and artisans - from around the nation to create an unforgettable experience just for you.

We've also got an excellent season of Gulfshore Playhouse Education shows this year - the beloved musical *Annie* and the hilarious play adaptation of *Clue*. These are just a few of the incredible things Gulfshore Playhouse Education is doing; I encourage you to take a look at the pages in the playbill to learn more about how our programs are impacting the community.

My hope is always that when you leave after the show, you feel even the slightest bit changed. Theatre is a collaborative exercise in contemplating humanity. We all experience it differently, though there may be shared laughs and common gasps; we see what we alone need to see and feel what we alone are meant to feel. Whether you leave with a smile on your face, a question on your mind, both, or anything in between, then I know we've done our job.

So buckle your seatbelt, sit back, relax, and enjoy the story that unfolds before you. We've got such a bright season ahead of us, a preamble to an even brighter future. This season we look forward to breaking ground on our new Baker Theatre and Education Center, meaning the move into that new and beautiful space is just around the corner. All of this is possible because of you. I'm so glad you're here. We've missed you. So sit back, relax, and enjoy the show!

Warmest regards,

A handwritten signature in black ink, appearing to read 'Kristen Coury'.

**KRISTEN COURY**

CEO and Producing Artistic Director



GULFSHORE PLAYHOUSE



# THANKS

*to donors and patrons like you,  
Gulfshore Playhouse has overcome  
tremendous challenges and emerged on  
the other side better than ever before.*

*We applaud the success of  
Gulfshore Playhouse and eagerly  
anticipate all the excitement  
this season will bring.*

**JANE AND STEVE AKIN**

*Season Angels*



GULFSHORE PLAYHOUSE

# *A Letter from the Chairman*

## **Welcome to the 2021-2022 Season at Gulfshore Playhouse!**



I am pleased to welcome you to the 17<sup>th</sup> anniversary of our founding, and the 15th consecutive year of original, professional, and artistically outstanding performances. Creating a theatre of this caliber in such a relatively small amount of time is an extraordinary achievement. We have a very bright future and I am excited to share with you as stakeholders in Gulfshore Playhouse.

As the Board Chair, I have the privilege of getting to look behind the curtain. Gulfshore Playhouse is made up of a very special group of people who contribute their talents, passion, and hard work to create the productions you're about to enjoy. It starts behind-the-scenes with our leaders, CEO and Producing Artistic Director Kristen Coury and Managing Director Joel Markus, the extraordinary staff, and the outstanding Board of Directors, and is made possible by the generous donors and our curious, engaged audience support. Like a great piece of theatre, all of us work together to make Gulfshore Playhouse an incredible theatre and education organization that is prepared for a dynamic future.

This is an exciting time for Gulfshore Playhouse. Your faith in this organization has been the catalyst for our growth and the reason there are so many achievements to celebrate. I am happy to report that Gulfshore Playhouse came out of the last fiscal year in strong fiscal condition. The organization has no long-term debt, and we have increased our annual fundraising. Our Capital Campaign met quiet phase goals, leading us into the current public phase of fundraising. We are now in the public phase of our Capital Campaign, as we work towards fully funding the new Baker Theatre and Education Center.

All of this is the backdrop for what will be a great season. In true Gulfshore Playhouse fashion, this season will thrill, challenge, and entertain you with its varied offerings featuring great professional talent from across the country.

I also want to draw your attention to how Gulfshore Playhouse Education continues to serve our community. Student actors will perform in two shows on the mainstage this year and continue to receive instruction from professional teaching artists. We are strengthening our relationship with the Collier County Public Schools to broaden access to theatre. Through a wide variety of programs and partnerships with local organizations like the Holocaust Museum and Artis—Naples, Gulfshore Playhouse Education is reaching out to all of the young people in our area.

I hope that you find this season stimulating, interesting, and entertaining. I encourage you to continue to be a part of the Gulfshore Playhouse community. Thank you for being here.

**STEVE AKIN**

*Chairman of the Board*



**GULFSHORE PLAYHOUSE**

# THANK YOU TO OUR 2021-2022 SEASON SPONSORS

## SEASON ANGELS

JANE & STEVE AKIN • PATTY & JAY BAKER

## SEASON BENEFACTORS

NANCY & TOM GALLAGHER • SUSAN REGENSTEIN & BARRY FRANK  
JANE & DAVE WILSON

## SEASON AMBASSADORS

ERIKA & PETER ARON • SHELLEY & STEVEN EINHORN  
CHRISTINE & TERRANCE FLYNN • VALERIE & NIZAR GHOUSSAINI  
JENNY & RICH HOUSH • JAMES & BRIGITTE MARINO • SANDI & TOM MORAN  
CARLY STEWART, PRIVATE JEWELER - HAVE JEWELS WILL TRAVEL • JOHN & CAROL WALTER

## PREMIER CORPORATE PARTNER

大成 DENTONS

COHEN  
& GRIGSBY

## CORPORATE EXECUTIVE PRODUCER

**MORAN**  
WEALTH MANAGEMENT

## EXECUTIVE PRODUCERS

LEE & PENNY ANDERSON  
MARY & PHIL BEUTH  
KYLA & RICH DE ASLA  
DARLENE & DON DEMICHELE  
BOBBI & DAVID DROBIS  
ROBERT & VICTORIA FESMIRE  
TIM HABBERSHON &  
ALLISON MURRAY  
MITCHELL HERTZ &  
ANNE CARLUCCI

DAVID & JERRI HOFFMANN  
GEORGE & PATRICIA KRAUS  
PAMELA & BOB KRUPKA  
GERRY & JODY LIPPES  
DAN & KATHY MEZZALINGUA  
KRISTIN & JOHN MILLER  
THELMA & BUD NEGLEY  
HUGH & ELIZA NEVIN  
CHRISTINE PADDOCK

GUY & SHERI PAPARELLA  
PAREKH FAMILY FOUNDATION  
GAIL KERN PASTER  
ANTHONY & BEVERLY PETULLO  
DOTTIE & JOHN REMONDI  
GLENDA & RICH STRUTHERS  
THE VINCENT VON ZWEHL  
MEMORIAL FUND  
JULIE & SAM WYMAN

NATIONAL  
ENDOWMENT  
for the  
**ARTS**  
arts.gov

THE  
**SHUBERT**  
FOUNDATION INC.

 **CULTURE  
BUILDS  
FLORIDA**  
FLORIDA DEPARTMENT OF STATE  
DIVISION OF CULTURAL AFFAIRS

## CREATE • ENGAGE • INSPIRE



GULF SHORE PLAYHOUSE

# *A Letter from the Mayor*



**Dear Friends,**

As the Mayor of the beautiful City of Naples, I am pleased to welcome you to Gulfshore Playhouse's 2021-2022 season.

Thank you for visiting and supporting our local professional theatre.

Gulfshore Playhouse has continued to enrich our community through the Arts for the last 17 years.

While offering an amazing experience to our community, you will also find that they have offered phenomenal education programs to our youth.

I am looking forward to this creative teams' season of exceptional theatre at Gulfshore Playhouse and I hope that you will too as they continue to enhance our community through the Arts.

Sincerely,

**MAYOR HEITMANN**

*Mayor of the City of Naples*



GULFSHORE PLAYHOUSE



We are honored to support Gulfshore Playhouse's mission of providing cultural programs that benefit the local communities in which we design and build.

[www.gilbaneco.com](http://www.gilbaneco.com)  
[www.h3hc.com](http://www.h3hc.com)

**Gilbane** 150  
**H<sup>3</sup>/ARQUITECTONICA**

*TINA AND DIANA  
ARE EAGERLY LOOKING  
FORWARD TO THEIR FIRST  
YEAR OF SHOWS AT  
GULFSHORE PLAYHOUSE.*



GULFSHORE PLAYHOUSE

***Patty & Jay Baker***  
*Season Angels*



Jeffrey Binder • Higher



Gulfshore Playhouse Education  
Little Shop of Horrors

Gulfshore Playhouse provided us with a little sanity and sanctuary during a turbulent year. Here's to another year of enjoying the remarkable talent Kristen Coury is able to bring to our community.

KRISTIN AND JOHN MILLER

Executive Producers



GULFSHORE PLAYHOUSE



The Cast of Native Gardens (2019)

**“THE PLAY’S  
THE THING.”**

*-Hamlet*

**“And Gulfshore  
Playhouse is the  
place to see it.”**

With our very best  
wishes for a  
magnificent season.

**Jane & Dave Wilson**

*Season Ambassadors*

# A QUINTESSENTIAL CONCERT EXPERIENCE

The highest caliber international talent defines **Grand Piano Series** - bringing contemporary elegance, vigor, and relevance to classical music.

## CONCERT SEASON 2021-2022

OCT 20  
NOV 10  
DEC 06

JAN 12  
FEB 02  
FEB 16  
MAR 09

St. Leo Auditorium (Bonita Springs)

MAR 30  
APR 27  
MAY 11

Wang Opera Center (Naples)

Jennifer Frautschi, violinist  
MAR 09

GRANDPIANOSERIES.ORG

(646) 734 - 8179

\$35 / \$45 / \$50

  
Milana Strezeva, Artistic Director



**J. SWEET**  
**CONSTRUCTION**

BUILDING EXCELLENCE

*Making your  
dream  
a reality.*

New Construction and Remodeling of Finer Homes & Condos

**239.325.5150**

**JSweetConstruction.com**

999 Vancerbilt Beach Rd Suite #200, Naples, FL 34108 CGC1510554



# THE CLAW BAR

COCKTAILS & DINING



PROUD SPONSOR OF  
GULFSHORE PLAYHOUSE

## DAILY BRUNCH

MONDAY-FRIDAY 8 AM - 2 PM

SATURDAY & SUNDAY 10:30 AM - 2 PM

---

## LATE LUNCH

DAILY 2 - 4 PM

---

## DINNER

FROM 4 PM DAILY

239-231-3912

221 9TH STREET SOUTH, NAPLES, FL  
IN THE BELLASERA RESORT

Let us help you create your

*Slice of Paradise...*



Downtown Naples | Marco Island | East Naples  
Golden Gate | Bonita Springs | San Carlos

# Live Exceptionally.

Locally owned and operated, Gulf Coast International Properties® professionals are committed to the highest level of concierge service for our clients.

**Service. Integrity. Luxury Experience.**

*Proud Supporter of*  
**GULFSHORE PLAYHOUSE**



Gulf Coast

**INTERNATIONAL PROPERTIES®**

*Representing the Finest Properties in Naples, Florida*

OLD NAPLES: 1144 Third Street South • 691 Fifth Avenue South,  
707 12th Avenue South • Naples, Florida 34102 • 239.434.2558

PELICAN BAY: Waterside Shops • 5435 Tamiami Trail North, Suite 19,  
Naples, Florida 34108



[www.gcipnaples.com](http://www.gcipnaples.com) • [www.portroyalwaterfronthomes.com](http://www.portroyalwaterfronthomes.com)  
[www.gcipluxuryrentals.com](http://www.gcipluxuryrentals.com)



**PREFERRED AV PROVIDER FOR  
GULFSHORE PLAYHOUSE OUTDOOR EVENTS**

**hothouseav.com**

**DEDICATED TO  
GETTING IT DONE.**



**BILL LUND**  
Senior Mortgage Loan Officer  
**239.877.1843**

william.lund@myccmortgage.com  
CrossCountryMortgage.com/William-Lund  
3501 Bonita Bay Blvd - Bonita Springs, FL 34134  
NMLS1825892 NMLS613656



Equal Housing Opportunity. All loans subject to underwriting approval.  
Certain restrictions apply. Call for details. NMLS3029  
(www.nmlsconsumeraccess.org) CrossCountry Mortgage, LLC

**YOUR  
AD  
HERE!**

FOR MORE INFO ABOUT  
RESERVING SPACE IN THE  
2022-2023 PLAYBILL

**Contact Our  
Administrative Office at  
(239) 261-7529.**



**GULFSHORE PLAYHOUSE**

# BESSEMER TRUST IS PROUD TO SUPPORT THE GULFSHORE PLAYHOUSE

Privately owned and independent, Bessemer Trust is a multifamily office that has served individuals and families of substantial wealth for more than 110 years. We offer comprehensive investment management, wealth planning, and family office services to help you and your family achieve peace of mind for generations.

To learn more about Bessemer Trust, please contact Mark Warnken, Wealth Advisor, at 239-659-5835, or visit [bessemer.com](https://bessemer.com).





CAUGHT  
YOU  
**LOOKING.**



## OCEAN PRIME

SEAFOOD • STEAKS • COCKTAILS

ADJACENT TO THE INN ON FIFTH • 699 5TH AVENUE SOUTH, NAPLES, FL 34102

239.430.0404 • [OCEAN-PRIME.COM](https://www.ocean-prime.com)

# The WINE STORE Jill's Provisions

1200 Central Ave., Ste 105 | 239.234.6625  
[www.thewinestorenaples.com](http://www.thewinestorenaples.com)



#### Featuring

Award-Winning Wines By-The-Glass or Bottle  
Complimentary Wine Tastings Daily  
Wine & Cheese Gift Baskets  
Farmstead Cheese & Charcuterie Platters  
Artisan Breads · Bean-to-Bar Chocolates · Gourmet Foods  
Online Shopping, Pick-Up & Local Delivery Available

# Give the gift of theatre.

***Looking for a unique gift for  
a birthday or holiday?***

***Consider a gift card  
available for any amount over \$25.***

*For details, visit Will Call or [gulfshoreplayhouse.org](http://gulfshoreplayhouse.org).*

GULF SHORE P L A Y H O U S E



GULFSHORE PLAYHOUSE

We can't wait to witness  
another incredible season  
and see what exciting new  
achievements await  
Gulfshore Playhouse!

Bravo!

**SUSAN REGENSTEIN & BARRY FRANK**  
*Season Ambassadors*



# YOU DON'T NEED THE DRAMA

*(present production excluded)*

At Meristem, we eliminate the conflict, suspense, tension and pathos from family wealth management. Yes, we'd be a humdrum script, but an invaluable partner.

Tap into our wealth of talent, experience and caring. At Meristem, we're breaking the fourth wall of compassionate wealth management.

ENJOY THE DRAMA . . . ON THE STAGE.



**MERISTEM**  
FAMILY WEALTH



LET US AUDITION FOR YOU.

MERISTEMFW.COM  
888.835.2577



- « Real Portfolio Diversification
- « Advanced Tax Management
- « Retirement Planning
- « Wealth Preservation

## Harness the Value of Volatility



Diamonds are created under pressure.  
Great ideas are formed in response to change.  
Portfolios are validated in times of volatility.

Our custom strategies are tailored to you and the market. *We don't outsmart the market, we engage it differently.*

### CURIOUS?

Contact Aaron Sevigny  
**(239) 992-9927**

[AcadiaWealth.com](http://AcadiaWealth.com)

3511 Bonita Bay Blvd., Suite 2  
Bonita Springs, FL 34134

Aaron P. Sevigny, CRPS®, AIF, CEP is a Registered Representative Offering Securities and Advisory Services Through United Planners Financial Services of America, A Limited Partnership. Member FINRA, SIPC. Acadia Wealth Management, LLC and United Planners Financial Services of America are independent companies.

# FLORIDA REP

PROFESSIONAL THEATRE IS BACK!

## 2021-22 SEASON

### ARCADE = ARCADE

### LET'S FALL IN LOVE

A WORLD PREMIERE CABARET EVENT!

**SEPT 28-NOV 7, 2021**

CELEBRATE WITH NAT KING COLE, FRANK SINATRA, & MORE!

### THE WOMAN IN BLACK

ADAPTED BY STEPHEN MALLATRATT

**OCT 26-NOV 14, 2021**

A ROLLERCOASTER OF THRILLS AND CHILLS!

### WEST SIDE STORY

BOOK BY ARTHUR LAURENTS • MUSIC BY LEONARD BERNSTEIN • LYRICS BY STEPHEN SONDHEIM

**NOV 23-DEC 15, 2021**

A Co-Production with the Education Department's Conservatory Program

### MORNING AFTER GRACE

BY CAREY CRIM • **JAN 4-26, 2022**

A HILARIOUS LATE-IN-LIFE LOVE STORY!

### DRIVING MISS DAISY

BY ALFRED UHRY

**JAN 18-FEB 13, 2022**

A PULITZER PRIZE-WINNING AMERICAN CLASSIC!

### INTO THE BREECHES

BY GEORGE BRANT

**FEB 8-MAR 5, 2022**

A HILARIOUS, VIBRANT, AND PATRIOTIC NEW COMEDY!

### A DOLL'S HOUSE, PART 2

BY LUCAS HNATH • **FEB 22-MAR 27, 2022**

BACK ONSTAGE WITH THE SAME CAST & CREATIVE TEAM!

### BUDDY: The Buddy Holly Story

BY ALAN JANES • **MAR 15-APR 13, 2022**

BEFORE THE BEATLES AND THE STONES, ROCK N ROLL WAS BORN!

### MAYTAG VIRGIN

BY AUDREY CEFALY

**APR 12-MAY 22, 2022**

A FUNNY & HEARTWARMING ROMANCE!



FLORIDA REP

FloridaRep.org

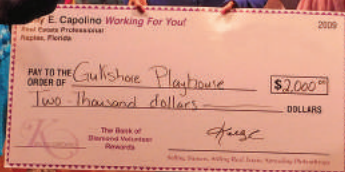
239.332.4488

Greg Longenhagen, Artistic Director • John Martin, Executive Director

**SUBSCRIBE NOW**  
FOR AS LOW AS \$224!

SINGLE TIX START AT \$59/\$55 • PREVIEWS \$39/\$35

Supporting Live Theatre  
and Kids through my  
Real Estate Sales!



**K** KELLY E. CAPOLINO  
Downing-Frye Realty, Inc.

(239) 877.6700 • [www.KellyInNaples.com](http://www.KellyInNaples.com)

*Naples has two  
important stages:*



***Our Beautiful Gulf Beaches  
and Our Fabulous  
Gulfshore Playhouse!***

*Looking forward to the 2021-2022  
season of great performances!*

*SAM AND JULIE WYMAN, Executive Producers*



*We are so grateful that Gulfshore Playhouse Education has continued to provide exemplary educational opportunities to our region's children throughout the pandemic. Thanks to Kristen Coury and Steven Calakos for their help in making these programs a reality.*



***Erika & Peter Aron***  
*Season Ambassadors*



GULFSHORE PLAYHOUSE



NAPLES' ORIGINAL  
*Karastan*  
RETAILER

**NAPLES FLOOR COVERINGS**  
*Established 1954, Our Reputation Earned*  
*52 Tenth Street South • Naples, FL 34102*

**239-262-6561**



GULFSHORE PLAYHOUSE



Here's to  
the  
**Wonderful  
and  
Dedicated  
People** of  
Gulfshore  
Playhouse.

SHELLEY AND STEVEN EINHORN and Rosie  
Executive Producers



Girl With Scarf  
Oil Painting

20" X 24"

Valerie Ghoussaini

[www.valerieghoussaini.com](http://www.valerieghoussaini.com)

WE ARE SO PROUD TO BE A PART  
OF THIS SEASON AT  
GULFSHORE PLAYHOUSE AND  
ALL THAT THEY HAVE IN STORE  
FOR THEIR BRIGHT FUTURE.



MARY & PHIL BEUTH  
Executive Producers



GULFSHORE PLAYHOUSE



## Chef-Led Independent Restaurants

WE INVITE YOU TO JOIN US AT ANY OF OUR LOCATIONS  
FOR AN EXCEPTIONAL CULINARY EXPERIENCE.

<p><b>Sea Salt</b></p>	<p><b>Barbatella</b> spirited Italian trattoria</p>	<p><b>DORONA</b> MODERN ITALIAN STEAKHOUSE</p>	<p><b>GRAPPINO</b> ITALIAN PASTA HOUSE</p>
<p><b>1186 3RD ST S, NAPLES, FL 34102</b> (239) 434-7258 SEASALTNAPLES.COM</p>	<p><b>1290 3RD ST S, NAPLES, FL 34102</b> (239) 263-1955 BARBATELLANAPLES.COM</p>	<p><b>2110 9TH ST N, NAPLES, FL 34103</b> (239) 529-2819 DORONANAPLES.COM</p>	<p><b>90 9TH ST N, NAPLES, FL 34102</b> 239-331-4325 GRAPPINONAPLES.COM</p>




FineMark National Bank & Trust  
believes the arts are an investment  
in our community.

We are proud to play a part in supporting  
**Gulfshore Playhouse.**



800 Laurel Oak Drive, Suite 101 • Naples, FL 34108

[www.finemarkbank.com](http://www.finemarkbank.com) • 239-963-0700 • Member FDIC • Equal Housing Lender 

Trust and investment services are not FDIC insured, are not guaranteed by the bank and may lose value.



CONGRATULATIONS  
to GULFSHORE PLAYHOUSE  
on another season!

We are so proud to support the  
arts community in Naples.



JENNY AND RICH HOUSH  
*Season Ambassadors*



XPANDABLE™

PICCHIOTTI

BEAUTY MEETS COMFORT & FIT



  
**BIGHAM**  
JEWELERS

2425 TAMiami TR N | 239.434.2800 | [WWW.BIGHAMJEWELERS.COM](http://WWW.BIGHAMJEWELERS.COM)



GULFSHORE PLAYHOUSE

*Kristen Coury, CEO & Producing Artistic Director*

# Another Revolution

A WORLD PREMIERE BY JACQUELINE BIRCHER

STARRING

**KRISHNA DOODNAUTH • RACHAEL FOX**

CEO & PRODUCING ARTISTIC DIRECTOR

**KRISTEN COURY**

COO & MANAGING DIRECTOR

**JOEL MARKUS**

SCENIC & LIGHTING DESIGNER

**STEVE TENEYCK\***

COSTUME DESIGNER

**RENEE BAKER**

SOUND DESIGNER

**LINDSAY JONES\***

VOCAL COACH

**JOHN PATRICK**

CASTING DIRECTOR

**MICHAEL CASSARA, CSA**

PRODUCTION STAGE MANAGER

**DANNY KUENZEL**

DIRECTOR OF PRODUCTION

**LINDSAY COOK**

DIRECTED BY **LISA ROTHE\*\***

*The Actors and Stage Managers employed in this production are members of Actors' Equity Association, the Union of Professional Actors and Stage Managers in the United States.*

*(\*) Denotes member of United Scenic Artists, Local USA 829*

*(\*\*) Denotes member of the Stage Directors and Choreographers Society*

# THE ANNUAL FUND FOR ARTISTIC EXCELLENCE

With your help we're putting Naples on the map for professional theatre.

From rip-roaring laughter to difficult subjects delivered with grace, Gulfshore Playhouse is a place where theatre lovers share exceptional experiences. Your gift helps us unite talented professionals from around the country to create unforgettable performances and support the next generation of theatre artists through our Education programs.

Your fully tax-deductible gift goes well beyond helping us produce exceptional theatre; it fuels creativity, stimulates economic growth in Southwest Florida, and creates meaningful experiences in our theatre and in our classrooms.

**HAVE QUESTIONS OR WISH TO MAKE A GIFT?**

**CONTACT US: (239) 261-7529**



GULFSHORE PLAYHOUSE

\*GULFSHORE PLAYHOUSE is a 501(c)(3) not-for-profit corporation and tax-exempt under section 170(b)(1)(A)(vi) of the IRS code. Tax ID #: 90-0178566 A copy of the official registration and financial information may be obtained from the division of consumer services by calling toll-free (800) 435-7352 within the state. Registration does not imply endorsement, approval, or recommendation by the state.

# Another Revolution

A WORLD PREMIERE BY JACQUELINE BIRCHER

## CAST OF CHARACTERS

Krishna Doodnauth.....Henry

Rachael Fox.....Kat

## SETTING

A science lab. Columbia University,  
Havemeyer Hall. 1968.

## RUN TIME

ANOTHER REVOLUTION will be performed  
with one 15-minute intermission.



Gulfshore Playhouse operates under agreements between the League of Resident Theatres (LORT), a consortium of regional theatres throughout the nation; Actors Equity Association (AEA), the union of professional actors and stage managers in the United States; the Stage Directors and Choreographers Society (SDC), an independent national labor union; and United Scenic Artists (USA), a union of scenic, costume, lighting and sound designers.



The National Alliance for Musical Theatre, founded in 1985, is a not-for-profit organization serving the musical theatre community. The 165 organizational members and 75 individual members, located throughout 33 states and abroad, are some of the leading producers of musical theatre in the world, and include theatres, presenting organizations, higher education programs and individual producers.



Gulfshore Playhouse is a member of Theatre Communications Group (TCG), the national organization for the American Theatre.



Gulfshore Playhouse is an Associate Member of the National New Play Network.

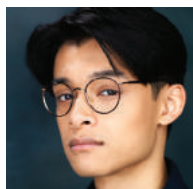


Actors' Equity Association (AEA) was founded in 1913 as the first of the American Actor unions. Equity's mission is to advance, promote and foster the art of theatre as an essential component of our society. Today, Equity represents more than 40,000 actors, singers, dancers and stage managers working in hundreds of theatres across the United States. Equity members are dedicated to working in the theatre as a profession, upholding the highest artistic standards. Equity negotiates wages and working conditions and provides a wide range of benefits including health and pension plans for its members. Through its agreement with Equity, this theatre has committed to the fair treatment of the actors and stage managers employed in this production. AEA is a member of the AFL-CIO and is affiliated with FIA, an international organization of performing arts unions. For more information, visit [www.actorsequity.org](http://www.actorsequity.org).



GENEROUSLY FUNDED BY

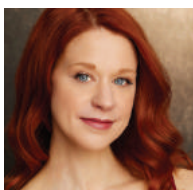
## ABOUT THE CAST



### KRISHNA DOODNAUTH (Henry)

is a New York-based actor, receiving his BFA from NYU and studying under the Stella Adler Studio. Most recently, as

Lysander in *A Midsummer's Night Dream*, he toured New York City, performing at public schools, holding facilities, and assisted living. He will soon appear in the upcoming feature film *Peas and Carrots*. This will be his first professional stage production out of college, and he hopes that you will enjoy it!

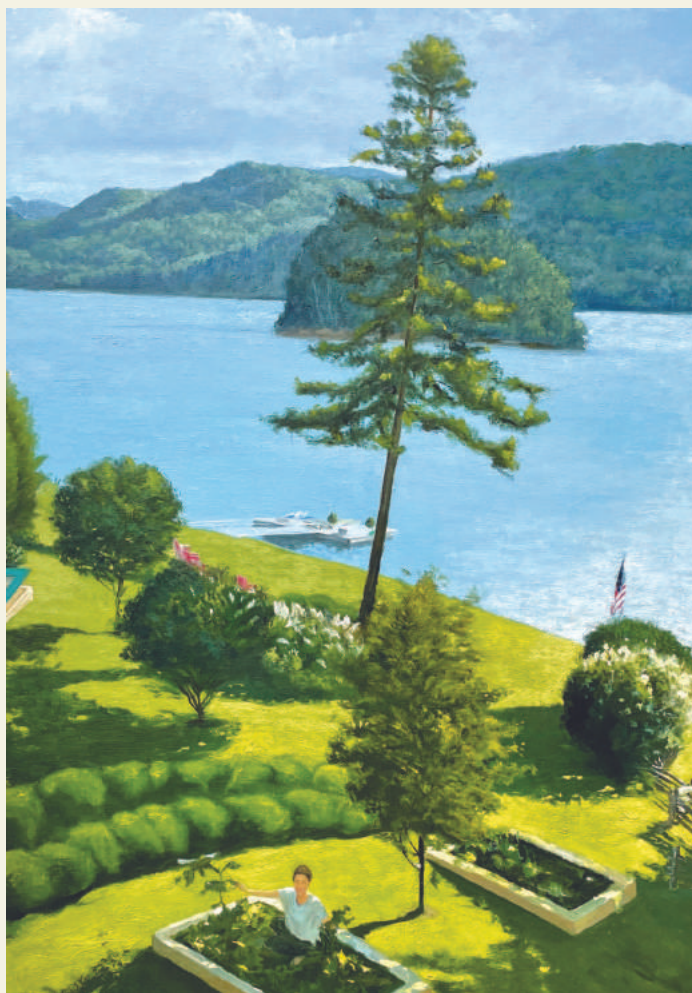


### RACHAEL FOX (Kat)

is an actor and writer, originally hailing from Kansas City, MO. Her Off-Broadway credits include *The Inferno*, *The King's Masquerade*

and *The Forgotten (Sleep No More)*. Regional credits include *Blood at the Root* and *Commedia* (Chautauqua Theater Company), *Why Did Desdemona Love the Moor?* (Provincetown Tennessee Williams Festival and the St. Louis Tennessee Williams Festival), *Much Ado About Nothing*, *The Learned Ladies*, *Tovarich*, *As You Like It*, *Trelawny of the Wells*, *Measure for Measure*, *Macbeth* and *A Midsummer Night's Dream* (Shakespeare Theatre of New Jersey), *King Lear*, *Much Ado About Nothing* and *Tamethat* (Arkansas Shakespeare Theatre). Film credits include *Campus Code*, starring Martin Scorsese and Ray Liotta, the recurring role of Charlie on the award-winning web series *Here We Wait*, as well as independent films *The Sound of Ill Days* and *Manhattan*. She holds an MFA from the University of Illinois at Urbana-Champaign and is a graduate of The Neighborhood Playhouse acting conservatory in New York.

# SELFON ART



40"x60" Oil on linen | 2021

Commission Lois Selfon, a well-known artist to create a real-life oil painting of your private outdoor setting to be completed this spring. Your exclusive painting will be a texture of four layers, which produces a sense of depth and color similar to woven fabrics.

Contact Lois Selfon  
**[lselfon@comcast.net](mailto:lselfon@comcast.net)** or text **239.572.1818**

**LOISSELFONART.COM**

# ABOUT THE CREATIVE TEAM

**JACQUELINE BIRCHER** (*Playwright*) is a playwright born and raised in New York City. Her work has been produced and/or developed with Ensemble Studio Theatre, Primary Stages, Centenary Stage Company, City Theatre, Playhouse on Park, Market Garden Theatre, Campfire Theatre Festival, Phoenix Theatre Company, Prologue Theatre, and the Sam French Off Off Broadway Festival, among others. Full-length plays include *Another Revolution*, *The Once and Future Casey Colman*, *Webster's Bitch*, and *The Rule of Thirds*. She has been a finalist for the O'Neill National Playwrights Conference, The Lark Playwrights' Week, Seven Devils Playwrights Conference, the NNPN National Showcase of New Plays, and she was the first-place winner of City Theatre's 2020 National Award for Short Playwriting. She studied literature and creative writing at Oxford University and Fordham College at Lincoln Center.

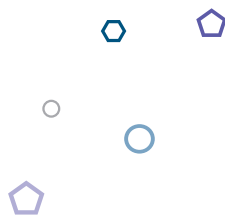
**LISA ROTHE\*\*** (*Director*) is a NY-based director. Her most recent directing work includes Drama League-nominated *Belly of the Beast* by Margaret Vandenburg, presented by TodayTix, New York Theatre Workshop and Daniel Dae Kim/3AD, *Steel Magnolias* (Guthrie Theatre), *Fun Home* and *Cat on a Hot Tin Roof* (Kansas City Repertory Theatre); *Pericles* (Next Chapter Podcasts), *The Names We Gave Him* by Ellen McLaughlin & composer Peter Foley (Montclair State); productions at Cincinnati Playhouse, Theatreworks Silicon Valley, Two River Theater, People's Light, Playmakers Repertory Theatre, Indiana Repertory Theatre, Irish Repertory Theatre, and more. Ongoing: Award-winning production of *Hold These Truths* by Jeanne Sakata, with actor Joel de la Fuente. Future: *By Any Other Name* (American Music Theatre Project), *Indecent* (Chautauqua Theater), *The Village of Vale* (musical podcast). Previous: Director of New Works at Kansas City Repertory Theatre; co-Artistic Director of The Actor's Center; co-President of the League of Professional Theatre Women; Drama League and Fox Fellow alum; Director of Global Exchange at The Lark for over five years. [www.lisarothe.com](http://www.lisarothe.com)

**STEVE TENEYCK\*** (*Scenic & Lighting Designer*) is pleased to be returning to Gulfshore Playhouse having designed scenery for the Broadway Cabaret during the 2020-

2021 season, scenery and lighting for *Skylight* in the 2018-2019 season and lighting for *Constellations* in the 2016-2017 season. Designs for The Dallas Theatre Center, Repertory Theatre of St. Louis, Syracuse Stage, The Pennsylvania Shakespeare Festival, Orlando Shakespeare Theatre, The Hangar Theatre, The Kitchen Theatre, Madison Opera, Syracuse Opera, Anchorage Opera, Minnesota Opera, The Florida Grand Opera to name a few. Steve is a member of United Scenic Artists Local 829 and teaches design at Ithaca College in New York.

**RENEE BAKER** (*Costume Designer*) A designer and a stylist, Renee Baker is also an Air Force Veteran, holds a Master's Degree in Apparel Design, is training to become a yoga instructor, and is an entrepreneur—having founded Tiger Stone Studios, based in Fort Myers, FL, which hosts personal styling services, digital media productions, and collaborative creative space for other artists. With a background in fashion, Renee has been costume designing for close to a decade. Whether on stage, the catwalk, or alongside her personal clients, her design philosophy embraces beauty, collaboration, and the art of self expression. She believes clothing is a powerful element of storytelling, and that when people look their best, they feel their best, and perform their best. Renee expresses her love for life, art, and connection through every design. Previous credits at Gulfshore Playhouse include *The Invisible Hand*, *Love Letters*, *Native Gardens*, *Holmes and Watson*, *Starcrossed*, *Shipwrecked*. [tigerstonestudios.com](http://tigerstonestudios.com)

**LINDSAY JONES\*** (*Sound Designer*) Broadway: *Slave Play*, *The Nap*, *Bronx Bombers*, *A Time To Kill*. Off-Broadway: *Privacy*, *Dry Powder* (Public Theater); *Mankind*, *Bootycandy* (Playwrights Horizons); *Rx* (Primary Stages) and many others. International: Royal Shakespeare Company (England), Stratford Shakespeare Festival (Canada). Regional: Mark Taper Forum, Arena Stage, Goodman Theatre, McCarter Theatre Center, The Old Globe, Steppenwolf Theatre Company, Guthrie Theater, Hartford Stage, Chicago Shakespeare Theater, Lookingglass Theatre Company and many others. Film/television scoring work: *The Brass Teapot* for Magnolia Pictures, *A Note of Triumph: The Golden Age of Norman Corwin* (2006 Academy Award Winner, Best Documentary Short Subject) for HBO Films. Awards: two Tony Award nominations (Best Score and Best Sound Design of a Play), seven Joseph



## Discover sophisticated wealth management solutions *close to home*

For more than 65 years, Glenmede Private Wealth has been partnering with individuals and families throughout our communities to create personalized wealth management plans and investment solutions. With your priorities as our guide and your best interests at heart, we'll work together to build diversified portfolios that aim to help achieve your objectives.

We welcome an opportunity to learn more about you, your passions and your goals.

**To start the conversation today, contact:**

**Joe McCool**  
561.571.4902

[go.glenmede.com/palmbeach](https://go.glenmede.com/palmbeach)

**GLENMEDE**  
PRIVATE WEALTH

© 2021 Glenmede. All rights reserved.

Jefferson Awards and 24 nominations; two Ovation Awards and three nominations; LA and SD Drama Critics Circle Awards; two ASCAP Plus Awards; multiple nominations for Drama Desk, Barrymore, Helen Hayes and IRNE, among many others. Founding member of the Theatrical Sound Designers and Composers Association (TSDCA) and The Collaborator Party.

**JOHN PATRICK (Vocal Coach)** serves as Company Vocal Coach for Gulfshore Playhouse. GP: *Higher, In the Next Room (or the vibrator play)*, *The Mystery of Irma Vep*, *Scapino*, *The Merchant of Venice*, *The Hound of the Baskervilles*, *My Fair Lady*, *Jacob Marley's Christmas Carol*, *The Importance of Being Earnest*. Guthrie Theater: *The Legend of Georgia McBride*. Tours: KIDZ BOP: World Tour 2019. Regional: PlayMakers Repertory Theater: Highlights include *The Cake*, *My Fair Lady*, *Sweeney Todd*, *Metamorphoses*, *Imaginary Invalid*, *A Number*, *Henry IV & V*. Teaching: Public Policy, UNC-Chapel Hill; Miller Voice Method Studio, NYC; Professional Actor Training Program, UNC Chapel Hill 2011-2018; NYU Graduate Acting Program, Southern Methodist University, the National Theater School of Finland at Helsinki, Queen's College and the Lyric Theater in Belfast, Northern Ireland. Training M.F.A., Rutgers University; B.F.A., Texas Christian University.

**MICHAEL CASSARA, CSA (Casting Director)** casts theatre and film in New York City, and is thrilled to be returning for a twelfth season with Gulfshore Playhouse, where has cast over 45 plays and musicals since 2009. Recent credits include *An American In Paris* (International Tour, dir. Christopher Wheeldon), *Spamilton* (NYC/Chicago/Pittsburgh CLO/national), *Enter Laughing* (York Theatre), *Gigantic* (Vineyard Theatre), *Forbidden Broadway* (last three editions/cast albums), *The 12* (Denver Center/world premiere). Film credits include *The Hyperglot* (Artios nomination for excellence in casting, dir. Michael Urie), *Contest*, *Grantham & Rose* (dir. Kristin Hanggi, starring Marla Gibbs, Jake T. Austin and Tessa Thompson). Other regional credits include productions for Ogunquit Playhouse, Actors Theatre of Louisville, Denver Center, Old Globe, Asolo Rep, Hangar Theatre, and many more. Resident Casting Director for the New York Musical Festival (NYMF) since 2007 and the National Alliance for Musical Theatre (NAMT) since 2013. Michael is a native Cleveland and a member of the Casting Society of America.

**DANNY KUENZEL (Stage Manager)** is giddy to the point of vibrating to be back in Naples, managing another production at Gulfshore Playhouse. She tackled *The 39 Steps* earlier this season and Bedlam's *Saint Joan* back in 2019. Other regional credits include: Mason Street Warehouse, Clarence Brown Theatre, Arkansas Repertory Theatre, Pioneer Theatre Company, Indiana Repertory Theatre, Weston Playhouse Theatre Company, The Alley Theatre, Drury Lane Oakbrook, and the Contemporary American Theatre Festival. 2022 marks Danny's 20<sup>th</sup> year as a member of Actors' Equity Association.

**JOEL MARKUS (COO & Managing Director)** is thrilled to be in his fourth season as Gulfshore Playhouse's Managing Director. Joel's 28-year career has taken him to some of our nation's leading professional regional theatres. Previously, he spent seven years at The Walnut Street Theatre in Philadelphia, America's oldest professional theatre with an annual budget of over \$16 Million. Joel has played integral roles in the production of hundreds of plays over ten seasons at the Indiana Repertory Theatre, four years at Geva Theatre Center in Rochester, NY, five summers at the Weston Playhouse in Vermont, American Players Theatre in Spring Green, Wisconsin, and North Shore Music Theatre in Beverly, Massachusetts. Joel is a graduate of Indiana University and originally from Miami, Florida.

**KRISTEN COURY (CEO & Producing Artistic Director)** has worked in London and New York for the English Shakespeare Company, Walt Disney Theatrical Productions, and Andrew Lloyd Webber's production company called The Really Useful Group. She has directed a feature film and produced an album. She is the founder of Gulfshore Playhouse. Under her leadership the organization survived the pandemic and has grown to an annual budget of \$5.2M, has maintained a net surplus for the seventeen years of its existence and holds no debt. Kristen has won numerous awards locally including Star in the Arts, 40 Under 40, and one of *Gulfshore Life's* Women of the Year. She has served on the board of the Theatre Communications Group, the national professional theatre advisory board, and currently serves on the board of the Naples Chamber of Commerce.

"How exciting it will be to step inside our spectacular new playhouse and see the lights come on for the first time!"



GULFSHORE PLAYHOUSE

GAIL KERN PASTER, *Executive Producer*

---

## PLAYWRIGHT'S NOTE

I wrote *Another Revolution* during a time of immense uncertainty. In a charged and polarized world, I found myself lost in what seemed to be a never-ending societal current of anger and fear. Still, it occurred to me that I couldn't be the first person to feel this way. As this play came into focus, I discovered a deep camaraderie with the generation who came of age in the 1960s against a similar backdrop of political and social unrest. But, no movement is only a movement. At the center of every revolution, you can always find a person trying their hardest to do what they think is right.

And yet, on the periphery of the revolution, you will find people there too. People who are smart and flawed and funny, who make mistakes and strive for a better version of their tiny place in the universe. Those are the characters at the heart of this play. By introducing us to the science of both the space race and the emerging environmentalism of the time, Kat and Henry allow us to see the wonder of the world through two new pairs of eyes that are completely opposite in every way. And, as a result, we realize that sometimes the greatest and most complex mysteries out there are the people right beside us.

While the events of this play take place in 1968, it is very much written for and about our current moment. I hope that you will find a small piece of yourself in both of these characters. They are not perfect, but they are human. They are here, together. Just as we are. And while it may take them some time to learn how, they each grow to recognize something beautiful in each other.

Thank you for choosing to attend live theater and I hope that you enjoy the show!  
-Jacqueline Bircher

---

## FROM THE DIRECTOR

I am sharing some poignant and pertinent quotes which articulate something more profound than I could relay in my own words.

"I believe a leaf of grass is no less than the journey work of the stars."  
~Walt Whitman, *Song of Myself*

"Those who contemplate the beauty of the earth find reserves of strength that will endure as long as life lasts. There is something infinitely healing in the repeated refrains of nature—the assurance that dawn comes after night, and spring after winter." ~Rachel Carson, *Silent Spring*

"The public must decide whether it wishes to continue on the present road, and it can do so only when in full possession of the facts. We still talk in terms of conquest. We still haven't become mature enough to think of ourselves as only a tiny part of a vast and incredible universe. Man's attitude toward nature is today critically important simply because we have now acquired a fateful power to alter and destroy nature. But man is a part of nature, and his war against nature is inevitably a war against himself. Now, I truly believe, that we in this generation, must come to terms with nature, and I think we're challenged as mankind has never been challenged before to prove our maturity and our mastery, not of nature, but of ourselves." ~Rachel Carson, *Silent Spring*

You say you want a revolution  
Well, you know  
We all want to change the world  
You tell me that it's evolution  
Well, you know  
We all want to change the world  
But when you talk about destruction  
Don't you know that you can count me out (in)  
~The Beatles, *Revolution*

Thank you for coming and enjoy the show! -Lisa Rothe

# ICONIC. ELEGANT. INSPIRING. **THIS IS OUR MOMENT.**

**Gulfshore Playhouse at the Baker Theatre and Education Center** will be a dazzling destination for exciting professional theatre in an iconic downtown location, opening Fall 2023.

The curtain is about to rise,  
and we need your help.

GULFSHORE  
PLAYHOUSE  
NEXT  
STAGE  
CAMPAIGN

With a gift of any size, you will bring us one step closer to creating a bold and beautiful venue where theatregoers will share exceptional experiences, where every seat has an amazing view of the Broadway-sized stage, and where we'll create new ways for people of all ages to discover the joy of theatre. We can't wait to meet you in our bright future.

**VISIT [nextstage.gulfshoreplayhouse.org](https://nextstage.gulfshoreplayhouse.org)**



*FOR MORE INFORMATION, CONTACT  
Kimberly Dye at [kdye@gulfshoreplayhouse.org](mailto:kdye@gulfshoreplayhouse.org).*

**TICKETS NOW ON SALE!**

# **JOEY & MARIA'S COMEDY WEDDING**

*The Nations #1 Interactive Dinner Show since 1992*

**Shows 7 Days A Week.**

It's just like going to a real Italian Wedding. You're part of "The Family".

Eat, Drink, Dance, Mingle with enough food to choke your bookie!

You might even catch the bouquet!

**\$75.00 pp NOV & DEC  
\$85.00 pp JAN - APRIL  
Includes Dinner & Show**

**NOW PLAYING  
AT THE BALLROOM**

570 Park St. off 5th Ave.  
*(Naples Women's Club)*

**RSVP TODAY**

888-5-NAPLES / 888-562-7537  
or visit us at

**ComedyItalianWedding.com**

*Dear Ma,  
If this doesn't work out  
can I come home?  
Love, Joey*



**Doors Open at 6:00**

**Dinner at 6:40**

**Show at 7:20**

*Reservations Required*

**Walk in is a crap shoot!**

# THEATRE ZONE

Home for the Holidays  
December 10-12, 2021

I Love My Wife  
January 13 - 23, 2022

Steve Martin's Bright Star  
February 10-20, 2022

Lerner & Loewe's Camelot  
March 10-20, 2022

The Bridges of Madison County  
April 21-May 1, 2022

Simon & Garfunkel:  
Live in Central Park, revisited  
JANUARY 17, 2022

THE FEUD. SINATRA & ROSELLI:  
2 GUYS FROM HOBOKEN  
January 29, 2022

The Mersey Beatles,  
"Favorites of Naples"  
FEBRUARY 22, 2022

Mack is Back  
"The Music of Bobby Darin"  
FEBRUARY 24, 2022

Larry Alexander:  
Broadway and Back  
MARCH 14, 2022

# 17 SUPER

SEASON 21/22

TICKETS  
ON SALE  
NOW!

[www.theatre.zone](http://www.theatre.zone)

LIVE PROFESSIONAL THEATRE  
888-966-3352 x1



*Party* **TAYLOR RENTAL** **Plus**  
of Naples

TENTS | TABLES | CHAIRS | LINENS | CHINA | DANCE FLOORS | STAGING

[WWW.TAYLORRENTALNAPLES.COM](http://WWW.TAYLORRENTALNAPLES.COM) | (239) 643-1334 | 4472 CORPORATE SQUARE, NAPLES, FL

# One Singular Sensation.

Gulfshore Playhouse  
enriches our lives in the  
place we call home.



**CRAIG JONES**

Premier Sotheby's International Realty

239.825.6857

Each office is independently owned and operated.

A heartfelt thank you to the  
Gulfshore Playhouse Education staff,  
donors, and partners for all you do to  
enrich the lives of SW Florida's children.

*The future is so bright!*

With the new Baker Theatre and Education Center,  
GP Education will reach tens of thousands  
more children in the years to come.



KYLA & RICH de ASLA  
Executive Producers



## THE ART OF SERVICE.

It takes skill to deliver gracefully on one's promises. At The Naples Trust Company, we have an entirely local team of exceptional wealth services, portfolio management, fiduciary, and client services professionals. These experienced, gracious team members take pride in responding promptly and efficiently to your investment and estate planning needs.

Are you ready for a better experience?  
Join The Naples Trust Company family and

**Discover the Difference.**

Trust & Estate Services  
Investment Management  
Family Office Services

West McCann, CFA - President

5920 Goodlette-Frank Road  
Naples, FL 34109  
239.774.4000 | 866.953.0070

THE  
NAPLES  TRUST  
COMPANY

A Division of The Sanibel Captiva Trust Company

PRIVATE WEALTH MANAGEMENT

[naplestrustcompany.com](http://naplestrustcompany.com)

NOT FDIC INSURED | NOT GUARANTEED | MAY LOSE VALUE

**After the show are you wondering what to do?  
Pick up a Naples Passport in the lobby.  
The little guide, packed with things to do.**

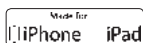
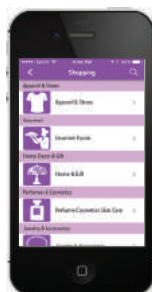
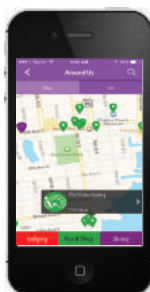


**Our Companion Product is the #1 App in Naples**

## **GO NAPLES APP**

### **Mobile App Features:**

- Sites & Attractions
- Restaurants
- GPS Directions
- Sunset Times
- Shopping
- Parks & Beaches
- Birds & Plants
- Art Galleries
- Museums
- Event Listings
- Guided Tours
- Maps



**TO DOWNLOAD THE APP  
JUST TYPE "GO NAPLES" INTO THE  
APPLE APP STORE OR GOOGLE PLAY**



For information: [info@appsinasnap.com](mailto:info@appsinasnap.com) • 516-435-7705



GULFSHORE PLAYHOUSE

***Congratulations***  
*to Gulfshore Playhouse on  
another season of wonderful theatre.  
We are proud to support art at a time  
when it is most needed.*

***CAROL & JOHN WALTER***  
*Season Ambassadors*



**WE ARE GIVING A  
STANDING OVATION  
FOR ANOTHER YEAR OF  
WORLD-CLASS THEATRE AT  
GULFSHORE PLAYHOUSE!**

**CHRISTINE AND TERRANCE FLYNN**  
SEASON AMBASSADORS



I am proud to have been an Executive Producer from the beginning. Looking forward to **another year of incredible experiences** at Gulfshore Playhouse. I am honored to play a part.



JEFFREY BINDER, CHRISTINE PADDOCK, & PAMELA PADDOCK

CHRISTINE PADDOCK

Executive Producer

THE S&P GUIDE

EDBY

SINCE  
WILLIAM C. HUFF  
1908

*A Tradition of Quality*

A full-service logistics provider specializing  
in complete concierge service for discerning  
clientele around the world.

NAPLES, FL BARRINGTON, NH

800.231.3557 [williamchuff.com](http://williamchuff.com)

JIM HENDERSON *Owner* JOHN PURCHASE *General Manager*



## EMPOWERING LEADERS ELEVATING PERFORMANCE



LOOKING FOR BUSINESS COACHING,  
LEADERSHIP DEVELOPMENT, TEAM BUILDING  
OR A KEY NOTE SPEAKER?

[WWW.LEADERSTEAM.COM](http://WWW.LEADERSTEAM.COM)

 **LEADERS  
TEAM**

## Gulfshore Playhouse



*Destined to be  
an iconic landmark  
enriching the cultural landscape*

**FDA** Fisher Dachs Associates  
Theatre Planning & Design

22 W 19 Street, New York, NY 10011  
212.691.3020  
[www.fda-online.com](http://www.fda-online.com)



GREAT CULTURAL  
**assets like**  
**Gulfshore Playhouse**  
**help the imagination soar.**

*Sandi & Tom Moran*



AARON SIMPSON CFP®, CLU®, ChFC®, RICP® • MARGARET F. KARR  
CHARLES E. CHESEBROUGH, JR. CFA® • MICHAEL MONGIN • KYLEN MORAN • THOMAS M. MORAN AIF®  
DONALD DRURY • JULIE SPIVY • COREY GRANT CFP® • RYAN FRANK CFP®

## OUR TALENTED CAST WORKS TO EARN YOUR APPLAUSE.

A noteworthy performance requires rigorous preparation, a comprehensive understanding of the material and an in-depth connection with the audience. The Moran Team is here with the expertise, experience and attentive service to help guide your financial future. Call today and discover the difference our talent can make.

### **MORAN** WEALTH MANAGEMENT

5801 Pelican Bay Boulevard  
Suite 110 • Naples, FL 34108  
239.920.4440 • [MoranWM.com](http://MoranWM.com)

Investment products and services are offered through Wells Fargo Advisors Financial Network, LLC (WFAFN).  
Moran Wealth Management is a separate entity from WFAFN. 0720-04168

# Naples Creative

PHOTOGRAPHY

*...is a proud partner of Gulfshore Playhouse*



[www.naplescreative.com](http://www.naplescreative.com)

# bodega *Olé*

SPANISH DINING EXPERIENCE



## Spanish Dining Experience

965 4th ave North  
Naples, FL 34102

239.304.8108

[bodegaolenenaples.com](http://bodegaolenenaples.com)

We're Proud  
to Support  
Gulfshore  
Playhouse.



• DEVELOPERS OF •  
Eleven Eleven Central  
Orange Blossom  
Naples Square  
Omega  
Altura

[ronto.com](http://ronto.com)

# Fashion Fresh

DRYCLEANING. LAUNDRY. ALTERATIONS



## EXCEPTIONAL VALUE

Competitive pricing, top service, and unsurpassed quality.

## FREE PICKUP & DELIVERY

Fashion Fresh will come to your door at least 2x weekly.

## 12 CONVENIENT LOCATIONS

Our stores are located near you. With the nearest, your Front Door!

## NO MINIMUM ORDERS

Get your garments cleaned as quickly as they get dirty. We're always nearby!

**QUICK SERVICE SIGN-UP**  
through our app, website or phone  
(239) 596-3100

## NO NEED TO BE HOME

Save time with free pickup & delivery direct to your door.

## WEBSITE

www.  
MyFashionFresh.com



## GET THE APP!

Schedule your pickup from your phone. Download from Apple and Google Play stores.



2008-2020

Visit us at  
**MyFashionFresh.com**  
for special offers and customer rewards, and follow us on



239.596.3100

# GULF SHORE OPERA

Let's GO together!



SEASON 8 | 2021-2022



BUY TICKETS ONLINE  
STARTING AT \$40  
239.529.3925

[WWW.GULFSHOREOPERA.ORG](http://WWW.GULFSHOREOPERA.ORG)

# GULF SHORE PLAYHOUSE EDUCATION



*Grease, 2021*

## PRODUCTIONS

Students perform musicals and plays on the **mainstage** while learning from professional teaching artists, gaining confidence, and improving performance skills.

## CLASSES

Specialty skills are taught through intensive, themed classes for all ages.

## ThinkTheatre

Teaching artists bring theatre-based **pedagogy and professional expertise** directly into the schools with classroom residencies focused on academic enhancement and self-expression.



*ThinkTheatre*

## PARTNERSHIPS

### CCPS

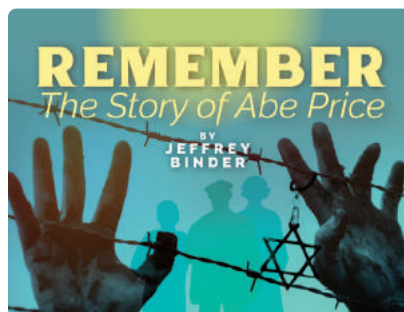
**Aiding in the development** of theatre classes, clubs, and programs in our area schools, we help ensure every child in the district has the opportunity to experience transformative theatrical experiences.

### **Remember: The Story of Abe Price**

The story of Holocaust Survivor Abe Price is memorialized through an original short play written by Jeffrey Binder and directed by Steven Calakos. This special partnerships enhances students' understanding of the Holocaust

**Holocaust  
Museum &  
Cohen Education Center**

and its relevance to their lives today.



*The Little Mermaid, 2018*

**For more info, call our administrative office at (239) 261-7529.**

# THANK YOU TO OUR DONORS

*This list reflects specific gifts to the Annual Fund for Artistic Excellence from 4/1/2021 through 4/1/2022. It does not include ticketed event purchases or gifts and pledges to the Next Stage Capital Campaign.*

## **PRODUCER (\$10,000-\$24,999)**

Carl and Susan Bolch - Racetrac  
Charles Cohen and Michelle  
McKenney  
Kristen Coury  
Constance Curran  
Jim and Shirley Curvey  
Scott and Rebecca Curvey  
George D'Angelo  
Gerard and Brooke de Gunzburg  
Robert and Terry Edwards  
Fidelity Investments  
Alan and Elizabeth Harris  
Jean and Leo Hertzog  
Jack Miller Family Foundation  
Jim and Elizabeth Jessee  
Marvin and Carol Lader  
Barbara Lapham  
In Memory of Will and Joan Larson  
The Nancy Perry Marriott Foundation  
Don and Carolyn McCulloch  
Tony and Pat McMunn -Tricam  
Industries, Inc.  
Moorings Park  
Mr. and Mrs. John J. Morgan Jr.  
Naples Trust Company  
National Endowment for the Arts  
Jack and F.E. Nortman  
Beth and Bill Reid  
Rick and DeAnna Rondinelli  
Fred and Pamela Sasser  
Tim and Stephanie Savage - Gulf Coast  
International Properties  
Aaron and Tennille Sevigny - Acadia  
Wealth Management  
Elaine and Howard Specter  
Susan Stielow  
Kenneth and Linda Sumner  
Patricia Sweet and Bill Marsh  
Cynthia Taft  
Vicki Tracy  
Paul and Kathy Weaver  
Enid and Jerry Weygandt

## **STAR SOCIETY**

### **STAR (\$5,000-\$9,999)**

Marty and Patricia Adams  
Lee and Peter Bewley  
Susan and William Brock  
James and Jonatha Castle  
Pat and John Cochran  
Norman and Suzanne Cohn  
Ken Davenport  
David Deutsch and Catelyn Juliano  
Don Drury  
George and Barbara Franks  
Susan Brown and Richard Geist  
Dave Gibbons  
Susan Gohl  
Tom and Nancy Hanson  
The Martin and Judythe Isserlis  
Charitable Fund  
JP Morgan  
Mrs. Nancy Kahn  
Ron Katz and Cheryl Coleman  
Zachary Kaye  
Marilyn R. Lightner  
EZE Foundation  
Robert and Rebecca McLennan Foundation  
Daniel and Ann Meyer  
Ned and Elvy Milenkovich  
Leo and Laura Montgomery  
Susan Mullin-Scott  
Tony and Cindy Panzica  
Ms. Ann Ratner  
Judith Rushmore  
Russell and Gail Smith  
Carly and Jeremy Stewart  
The Other Stratton Foundation  
Steve and Jean Thoma  
Nancy White  
The Wiesler Family Foundation  
Van Zandt and Myra Williams  
Peter and Ursula Wranik  
Michael Wynn

# THANK YOU TO OUR DONORS

---

## ***DIRECTOR [\$2,500-\$4,999]***

Gregory Anselmi  
Goldie and Louis Bertone Donor Advised  
Fund at the Chicago Community  
Foundation  
Richard and Jane Borchers  
Dr. James M. Buchweitz and Mrs. Erica  
Buchweitz  
Dennis and Adrienne Cady  
Robert and Moya Chase  
Dean Corsones and Paula Polito  
Jane Enos  
William and Kathleen Farley  
Ms. Nancy Garfen  
Jack and Graceann Hoopes  
Paul Allen and Lisa Kahn-Allen  
Max Kagan Family Foundation  
Bob and Diane Levy  
Joe and Dana Matina  
Sarah and Steven Owen  
Jack and Donna Painter  
Russell and Sandra Peppet  
Ric and Laurie Phillips  
Dave and Terry Rayburn  
Karen and Alan Reynolds  
Ric and Louise Rust  
Ned and Kathy Sachs  
Dinesh and Sarah Sharma  
F. Samuel and Karen Smith  
Lee and Marilyn Tenzer  
Cat Tieger  
Tony Fross and Katrin van Dam  
Marjorie W. Wyman Charitable Trust  
Judith and Leo Zickler

## ***PLAYWRIGHT (\$1,000-\$2,499)***

Chris and Meredith Adams  
Ashok Bakhru  
William and Renee Barry  
Mr. and Mrs. David I. Barton  
Carol and \*Michael Bishko  
Sue Bookbinder  
Ann Amer Brennan  
Jerry Brown and Linda LaRue Brown  
Dee and Dickson Brown

Thomas and Kathleen Burke  
Gisselle and Jorge Calleja  
Karyn and Len Capozzo  
David Castillo  
The Green Heron Fund  
Suzanne Costa  
Domenic and Michelle Costantini  
Joyce and Patrick Coughlan  
Wayne and Claire Dailey  
The Iqbal and Shelby Mamdani  
Foundation  
Jim and Ruth Duffy  
Kimberly and Douglas Dye  
Carol S. Eicher  
Janet and Gary Ellis Linden Foundation  
Enterprise Holdings Foundation  
Donna and David Eskra  
Jim and Dolores Fernandez  
Drs. Graham and Ann Frank  
Marsha and Michael Goldstein  
Mr. and Mrs. William Hagman  
Judith and Howard Harper  
Greg and Dierdre Harris  
Bruce and Holly Johnstone  
Michael and Mary-Jane Kitchen  
Jason and Sandra Korn  
Gwen Langley  
Nancy G. Lauridsen  
Dorothy and Dan Leach  
Gayle Levy and Martin Barber  
Brenda and Mark Lichtenstein  
Rebecca and David Linz  
Joseph Lombardoizzi  
Linda Lovisa  
John Lyngaas and Linda Noel  
Richard Macken  
Edward and Florean Mader  
Charlie McDonald  
William and Valerie McGarry  
Donna and Philip Messer  
Paul Mockenhaupt  
Christina Mona  
Peter G. Moore  
Wendy Needham  
Maike and Jim O'Rourke

## THANK YOU TO OUR DONORS

---

Audrey and Vaughn Pengelly  
Joe and Chan Pike  
Joyce W. Poitras  
Steve Pomeranz and Penny Kereiak  
Dell and Judy Pooler  
Herbert and Patti Price  
Lance and Ellen Primis  
Jane Purdy Berger  
Barbara and Mark Quasius  
Anne Noonan and Jim Rathmann  
Anderia Voss and William Ravenel  
Bob and Micki Ravitz  
Thomas M. and Lisa Read  
Richard and Kathleen Redfern  
John F. and Judith B. Remondi  
Karen and Patrick Ricci  
Jerry and Wendy Richman  
Charles and Kathryn Rieger  
Cynthia and Michael Scholl  
Robert Schultheis  
Ron Schwier and Marti Starkey  
Davey and Kristine Scoon  
Laura Scott  
Millie and James Sernovitz  
Donald and Arlene Shapiro  
Maureen Silliman  
Joy Simeonova  
Bonnie Slobodien  
Beth W. Smith  
Cherry Smith  
Tyler Smith and Ashley Dewji  
Stephen B. and Mary Smith  
Solot and Karp Family Foundation  
Michael and Karin Standen  
Roberta and Rodger Taylor  
Roz S. Travis and Matt Koch  
Carolyn Vogel  
Lorry Ann Cipriano and William Whelpley  
Michal Wiesler  
Katherine Wildman  
Rio Wilson  
Jeri L. Wolfson Foundation  
Anita Wright  
Lou and Bruce Zellner

### **PLAYHOUSE PARTNERS**

#### **SUSTAINER (\$500-\$999)**

Frank Accarino  
Linda Adamany  
Lillian Ambroggio  
Ricki Baker and Steve Mason  
Tim and Sarah Becker  
Martin Berman and Mary Ann Jasienowski  
Mr. and Mrs. Gary Blemaster  
Kevin Bowen and Donna Kane  
Cindy Brady  
Ian Breusch  
Vic and Patti Caroli  
Alan Buchholz and Donna Carty  
Mrs. Lois Cohen  
Gary and Kathy Danler  
Lisa and Pete Denove  
Mrs. Chantal & Frank Dukette  
Gretchen Durkot and Thomas Selwold  
Juan and Juliana Espinoza  
Geoff and Mary Evans  
George and Mary Forshay  
Christine Fiedrich  
John Furanna  
Thomas and Carole Guyette  
Linda Hall  
Scot and Robin Hamilton  
Honorable Teresa Heitmann and Dr. Jeffrey Heitmann  
Paul and Maureen Hickey  
Mary Hintlian  
Hedy and Mark Holmberg  
Sydney and Hazel Horsfield  
Courtney and Jonathan Howgate  
Scott Hutzler  
Judy and Jack Kaufman  
Henry and Jane Kelly  
Art and Kathy Knight  
Dennis and Carolyn Kois  
Terrence and Patricia Ladrigan  
Laura and Richard Lehrich  
Ms. Heather Lerner  
Robert and Barbara Levine  
Mr. & Mrs. Richard Liddy

# THANK YOU TO OUR DONORS

---

Donna and Craig Manchen  
Mr. West McCann  
Doug and Lyn Mehle  
Mr. and Mrs. Michael D. Milone  
Mr. and Mrs. Mongiello  
Bruce Patrick  
Allison and Frank Pezzuti  
Shontra and Andre Powell  
Daphne Jameson and Jim Schmotter  
Susan and George Schreiber  
Lois Selfon  
Janis Siegel  
Mr. and Mrs. Jerald and Joy Spivak  
Christina Starzyk  
Ntozake Shange Trust  
Patti and Elliott Trumbull  
George Valva  
Eijk and Rose-Marie Van Otterloo  
Barbara Walters  
Bruce Weitz  
Beverly and John Wernette  
Mrs. Lynn Wigton



Lou and Eva Hoff  
Lee and Tim Kraus  
Loralee and Ray LeBoeuf  
Cary and Robert Leher  
Mrs. Patricia L. Leikhim  
Diane and Dan McCaw  
Ann Richard and Burton Meisner  
Lawrence and Linda Meyer  
Barbara and Bud Miller  
Ronald and Ruth Mutchnik  
Bruce Nichols  
Arthur Paone  
Lauree Personette  
John and Lauren Redeker  
John and Julie Reid  
Mr. and Mrs. Bruce Robert  
Robert Wood Johnson Foundation  
Marlene Rubenstein  
Floyd and Iris Shapiro  
Sue Sincock  
Richard and Bonnie Singer  
Ron and Carol Sperling  
Charles and Denise Strain  
Peter Wall  
Michal Wiesler

*\*deceased*

## ***SUPPORTER (\$250-\$499)***

Claudia Amen  
Caprita Archer  
Luanne Batternberg  
Scott and Beth Beatty  
Timothy and Florence Blewett  
Becki Kurdle and Danny Boyd  
Deborah Brittain  
Mr. and Mrs. Stephen E. Casey  
William Conley  
Ted Konstantopoulos and Laura  
Connors  
Mary Beth Crawford  
Judy Criswell  
Helen Daniels  
In loving memory of Christine Drobny  
Hilda and Charlie Emerson  
Glen Engelmann  
Joan and Azariah Eshkenazi  
Vanessa and Tom Forster  
Joanne Fowler  
Gail Goggin  
Alan and Helene Gordon

---

## ***STANDING OVATION SOCIETY MEMBERS***

Mary and Phil Beuth  
Kristen Coury  
Tom and Nancy Gallagher  
Elizabeth and Jim Jessee  
Glenda and Rich Struthers  
Jane and Dave Wilson



## GULF SHORE PLAYHOUSE

### BOARD OF DIRECTORS

STEVE AKIN, *Chairman of the Board* • RICH STRUTHERS, *Vice-Chair*  
 ERIKA ARON, PATTY BAKER, KRISTEN COURY, ASHLEY DEWJI, DAVID DROBIS, TOM GALLAGHER,  
 NIZAR GHOUSSAINI, TIM HABBERSHON, MITCH HERTZ, JENNY HOUSH, JASON HUNTER KORN,  
 PAMELA KRUPKA, MARV LADER, DON McCULLOCH, SANDI MORAN, JACK NORTMAN, TONY PANZICA,  
 GAIL KERN PASTER, SHONTRA POWELL, SUSAN REGENSTEIN, TENNILLE SEVIGNY, PAT SWEET, DAVID WILSON,  
 DON GUNTHER, *Emeritus*, ROBERT HARDEN, *Emeritus*

### LEADERSHIP

KRISTEN COURY, *CEO & Producing Artistic Director*  
 JOEL MARKUS, *COO & Managing Director*

### ARTISTIC & EDUCATION

CEO & Producing Artistic Director.....KRISTEN COURY  
 Director of Education.....STEVEN CALAKOS  
 Literary Manager.....AUDREY ZIELENBACH  
 Education Assistant.....EMILIE BAARTMAN  
 Education Intern.....MEREDITH SINGLETON

### ADVANCEMENT

Chief Advancement Officer.....KIMBERLY DYE  
 Director of Development.....SARAH OWEN  
 Development Assistant.....BRANDON HORWIN  
 Development Intern.....SARA JARRELL

### MARKETING

Chief Marketing Officer.....ALEJANDRO CASTAÑO  
 Marketing Intern.....KENZIE FRYSZTAK

### FINANCE & ADMINISTRATION

COO & Managing Director.....JOEL MARKUS  
 Director of Finance.....ALYSON McCOY  
 General Manager.....JIM DALLAS  
 Company Manager.....CHELSEA WALSH  
 Asst. Company Manager.....SHELBY GILBERTO  
 Office Manager/Bookkeeper.....LUKE MATLOCK  
 Administrative Assistant.....MACKENZIE ROBERTS  
 Patron Services Manager.....ASHLEY POLLARD  
 Box Office Manager.....DAVE BLOUNT  
 Audience Services Coordinator.....McKENNA CLOUD

### PRODUCTION

Director of Production.....LINDSAY COOK  
 Technical Director.....JOHN FORTON  
 Asst. Technical Director.....ALEX RIGGS  
 Master Carpenter.....ANTHONY KNUDSON  
 Props Master.....ELENA ROMERO  
 Props Artisan.....KATHLEEN GIESELMAN  
 Scenic Charge Artist.....JAMES ALLEN  
 Scenic Artists.....ALIVIA CROSS  
 GENESIS DEWITT  
 Master Electrician.....ELIZABETH KENNEL  
 Sound Engineer.....SEAN MCGINLEY  
 Lighting/Sound Intern.....CHRIS BYRD  
 Costume Shop Manager.....JENNIFER BRONSTED  
 Draper/Workroom Lead.....RACHEL CLAYTON  
 Wardrobe Supervisor.....CHANDA HAWTHORNE  
 Wardrobe Intern.....EMILY MURRAY  
 Costumes Intern.....KAELYN WILLIAMS  
 Stage Management Intern.....MADELYN HAWVER

## GULF SHORE PLAYHOUSE

### ADMINISTRATIVE OFFICES

2640 Golden Gate Pkwy, Suite 211  
 Naples, Florida 34105  
 (239) 261-7529 • [GulfshorePlayhouse.org](http://GulfshorePlayhouse.org)

## SPECIAL THANKS

Jen, Pete, James and Doug at The Norris Center • All of our Volunteer Ushers!



[gulfshoreplayhouse](https://www.facebook.com/gulfshoreplayhouse)



[@GulfshorePlay](https://twitter.com/GulfshorePlay)



[gulfshore.playhouse](https://www.instagram.com/gulfshore.playhouse)

**FIRE NOTICE:** The exit indicated by a red light and sign nearest to the seat you occupy is the shortest route to the street. In the event of fire or other emergency, please do not run—WALK to that exit.



The Norris Center is accessible, and accommodations for wheelchair-bound patrons can be made. Please see house management for proper assistance.

GULF SHORE PLAYHOUSE is a 501(c)(3) tax exempt organization (U.S. EIN: 90-0178566) regulated by the Florida Division of Agriculture and Consumer Services pursuant to the Florida Solicitation of Charitable Contributions Act. Our FDACS Number is CH19104. A COPY OF THE OFFICIAL REGISTRATION AND FINANCIAL INFORMATION MAY BE OBTAINED FROM THE DIVISION OF CONSUMER SERVICES BY CALLING TOLL-FREE WITHIN THE STATE (800-435-7352) OR VISIT [WWW.FLORIDAConsumer-HELP.COM](http://WWW.FLORIDAConsumer-HELP.COM). REGISTRATION DOES NOT IMPLY ENDORSEMENT, APPROVAL, OR RECOMMENDATION BY THE STATE.

# The Standing Ovation Society

## GULF SHORE PLAYHOUSE

The world-class professional theatre and educational opportunities created by Gulfshore Playhouse are made possible thanks to the sustained generosity of loyal patrons like you. **By including Gulfshore Playhouse in your estate plan, you are supporting Gulfshore Playhouse's long-term fiscal stability and leaving a lasting legacy that will allow us to create, engage, and inspire for many years to come.**

**We understand that the choice to designate a planned gift is a deeply precious and personal one and we thank you for your consideration.** When you become a member of the Standing Ovation Society, you are joining an ensemble of thoughtful and imaginative visionaries who believe, as you do, in the transformative power of world-class professional theatre and educational opportunities in our region. Your gift will touch the lives of all who walk through our doors and ensure our ability to carry out our mission.

If you are interested in naming Gulfshore Playhouse in your plans, we encourage you to discuss your options with an attorney, financial advisor, or estate-planning expert. Planned gifts may offer you additional benefits such as tax benefits, additional income, and flexibility to alter your plans should your circumstances change.

The Cast of *My Fair Lady*



**If you would like to notify us of your intent or discuss your options, please contact Kimberly Dye: 239.261.7529 • [kdye@gulfshoreplayhouse.org](mailto:kdye@gulfshoreplayhouse.org).**



ALL WE NEED  
ARE YOUR HIGHEST EXPECTATIONS.



Allow us to maximize exposure of your home with our enviable marketing resources and global affiliations.

The Unrivaled Leader in Real Estate

JohnRWood.com | (877) 262-1300

